



# Certificate of Analysis

## CANNABUSINESS LABORATORIES, LLC

### Customer:

Flowerz, LLC  
40 McFerrin Avenue  
Nashville, TN 37206

Sample ID **221121020**  
Order Number **CB221121009**  
Sample Name **Rock Candy**

External Sample ID

Received Date **12/5/2022**  
COA Released **12/7/2022**

Batch Number  
Product Type **Flower**  
Sample Type **Flower**

Comments

### CANNABINOID PROFILE

Analyte	LOQ (%)	% Dry Weight	mg/g
CBC	0.01	0.043	0.432
CBD	0.01	0.632	6.318
CBDa	0.01	11.16	111.6
CBDV	0.01	ND	ND
CBG	0.01	0.034	0.342
CBGa	0.01	0.397	3.975
CBN	0.01	ND	ND
d8-THC	0.01	ND	ND
d9-THC	0.01	0.075	0.754
THCa	0.01	0.437	4.367
<b>Total Cannabinoids</b>		<b>12.78</b>	<b>127.8</b>
<b>Total Potential THC</b>		<b>0.458</b>	<b>4.584</b>
<b>Total Potential CBD</b>		<b>10.42</b>	<b>104.2</b>
<b>Total Potential CBG</b>		<b>0.383</b>	<b>3.832</b>

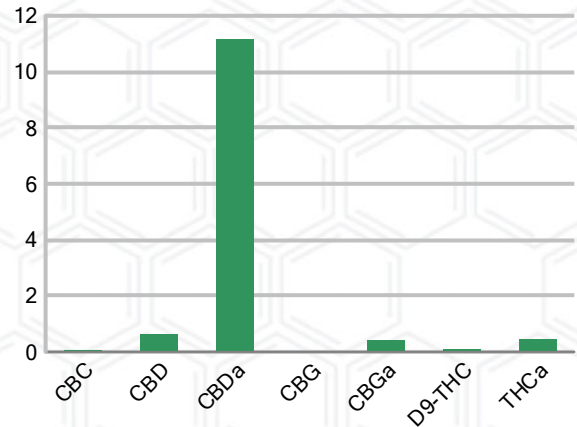
**Ratio of Total Potential CBD to Total Potential THC** **22.75 : 1**

**Ratio of Total Potential CBG to Total Potential THC** **0.84 : 1**

### SAMPLE IMAGE



### CANNABINOIDS % Dry Weight



\*Total Cannabinoids refers to the sum of all cannabinoids detected.

\*Total Potential CBD = (0.877 x CBDa) + CBD. \*Total Potential THC = (0.877 x THCa) + THC. \*Total Potential CBG = (0.877 x CBGa) + CBG.

\*Total Potential THC/CBD are calculated to take into account the loss of an acid group during decarboxylation.



*J.Hobgood*  
Laboratory Manager

SIGNATURE

Jamie Hobgood

LABORATORY MANAGER

12/07/2022 12:56 PM

DATE

This product has been tested by CannaBusiness Laboratories using validated testing methodologies and a quality system. Values reported relate only to the product tested. CannaBusiness Laboratories makes no claims as to the efficacy, safety, or other risks associated with any detected or non-detected levels of any compounds reported herein. This Certificate shall not be reproduced except in full, without the written permission of CannaBusiness Laboratories. Photo is of sample received by the lab and may vary from final packaging. The results apply to the sample as received.



# Certificate of Analysis

## CANNABUSINESS LABORATORIES, LLC

### Customer

Flowerz, LLC  
40 McFerrin Avenue  
Nashville, TN 37206



Overall Batch Results	
Pesticide	Moisture Content
Potency	Water Activity
Mycotoxins	Heavy Metals
Microbial Screen	Residual Solvents
Terpenoids	

**Sample Name:** Rock Candy  
**Sample ID:** 221121020  
**Order Number:** CB221121009  
**Product Type:** Flower  
**Sample Type:** Flower  
**Received Date:** 12/05/2022  
**Batch Number:**  
**COA released:** 12/07/2022 12:56 PM

Potency (mg/g) Dry Weight			
Date Tested: 12/06/2022		Method: CB-SOP-028	
Instrument:			

<b>0.458 %</b> Total THC	<b>10.42 %</b> Total CBD	<b>12.78 %</b> Total Cannabinoids	<b>127.8 mg/g</b> Total Cannabinoids
-----------------------------	-----------------------------	--------------------------------------	---

Analyte	Result	Units	LOQ	Result	Units
CBC (Cannabichromene)	0.043	%	0.010	0.432	mg/g
CBD (Cannabidiol)	0.632	%	0.010	6.318	mg/g
CBDa (Cannabidiolic Acid)	11.16	%	0.010	111.6	mg/g
CBDV (Cannabidivarin)	ND	%	0.010	ND	mg/g
CBG (Cannabigerol)	0.034	%	0.010	0.342	mg/g
CBGa (Cannabigerolic Acid)	0.397	%	0.010	3.975	mg/g
CBN (Cannabinol)	ND	%	0.010	ND	mg/g
D8-THC (D8-Tetrahydrocannabinol)	ND	%	0.010	ND	mg/g
D9-THC (D9-Tetrahydrocannabinol)	0.075	%	0.010	0.754	mg/g
THCa (Tetrahydrocannabinolic Acid)	0.437	%	0.010	4.367	mg/g

Terpenoids					
Date Tested: 12/06/2022			Method: CB-SOP-026		
Instrument:					

Analyte	Result	Unit	LOQ	Result	Unit
alpha-Bisabolol	0.174	mg/g	0.100	0.0174	%
alpha-humulene	0.231	mg/g	0.100	0.0231	%
alpha-pinene	0.344	mg/g	0.100	0.0344	%
alpha-terpinene	<LOQ	mg/g	0.100	<LOQ	%
beta-caryophyllene	0.772	mg/g	0.100	0.0772	%
Beta-myrcene	1.570	mg/g	0.100	0.1570	%
Beta-pinene	0.148	mg/g	0.100	0.0148	%
cis-Nerolidol	<LOQ	mg/g	0.100	<LOQ	%
Camphene	<LOQ	mg/g	0.100	<LOQ	%
d-Limonene	0.205	mg/g	0.100	0.0205	%
delta-3-Carene	<LOQ	mg/g	0.100	<LOQ	%
Eucalyptol	<LOQ	mg/g	0.100	<LOQ	%
gamma-Terpinene	<LOQ	mg/g	0.100	<LOQ	%
Geraniol	<LOQ	mg/g	0.100	<LOQ	%
Guaiol	0.108	mg/g	0.100	0.0108	%
Isopulegol	<LOQ	mg/g	0.100	<LOQ	%
Linalool	0.269	mg/g	0.100	0.0269	%
Ocimene (mixture of isomers)	<LOQ	mg/g	0.100	<LOQ	%
p-Isopropyltoluene (p-Cymene)	<LOQ	mg/g	0.100	<LOQ	%
trans-beta-Ocimene	<LOQ	mg/g	0.100	<LOQ	%
trans-Nerolidol	<LOQ	mg/g	0.100	<LOQ	%
Terpinolene	<LOQ	mg/g	0.100	<LOQ	%

Potency (mg/g) Dry Weight			
Date Tested: 12/06/2022		Method: CB-SOP-028	
Instrument:			

Analyte	Result	Units	LOQ	Result	Analyte	Result	Units	LOQ	Result
Percent Moisture	11	%	0.010						



*J.Hobgood*  
Laboratory Manager

Jamie Hobgood

12/07/2022 12:56 PM

SIGNATURE

DATE

NT = Not tested, ND = Not detected; LOQ = Limit of Quantitation; <LOQ = Detected; >ULOL = Above upper limit of linearity; CFU/g = Colony forming units per 1 gram; TNTC = Too numerous to count

This product has been tested by CannaBusiness Laboratories using validated testing methodologies and a quality system. Values reported relate only to the product tested. CannaBusiness Laboratories makes no claims as to the efficacy, safety, or other risks associated with any detected or non-detected levels of any compounds reported herein. This Certificate shall not be reproduced except in full, without the written permission of CannaBusiness Laboratories. Photo is of sample received by the lab and may vary from final packaging. The results apply to the sample as received.