



Certificate of Analysis

CANNABUSINESS LABORATORIES, LLC

Customer:

Flowerz, LLC
40 McFerrin Avenue
Nashville, TN 37206

Sample ID **221121021**
Order Number **CB221121009**
Sample Name **Sapphire Kush**

Received Date **12/5/2022**
COA Released **12/7/2022**

External Sample ID

Batch Number
Product Type **Flower**
Sample Type **Flower**

Comments

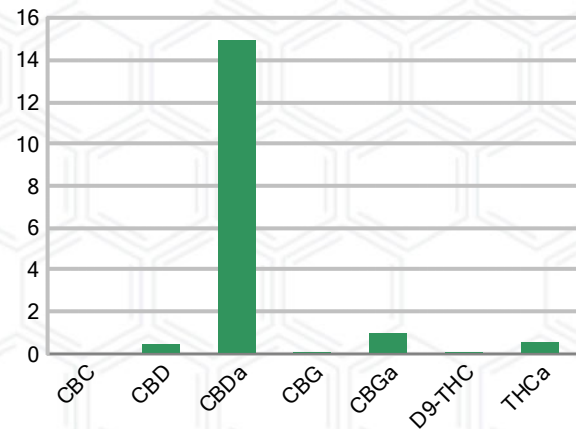
CANNABINOID PROFILE

Analyte	LOQ (%)	% Dry Weight	mg/g
CBC	0.01	0.046	0.455
CBD	0.01	0.445	4.450
CBDa	0.01	14.94	149.4
CBDV	0.01	ND	ND
CBG	0.01	0.084	0.842
CBGa	0.01	0.986	9.856
CBN	0.01	ND	ND
d8-THC	0.01	ND	ND
d9-THC	0.01	0.069	0.694
THCa	0.01	0.555	5.549
Total Cannabinoids		17.12	171.2
Total Potential THC		0.556	5.561
Total Potential CBD		13.54	135.4
Total Potential CBG		0.950	9.495
Ratio of Total Potential CBD to Total Potential THC			24.35 : 1
Ratio of Total Potential CBG to Total Potential THC			1.71 : 1

SAMPLE IMAGE



CANNABINOIDS % Dry Weight



*Total Cannabinoids refers to the sum of all cannabinoids detected.

*Total Potential CBD = (0.877 x CBDa) + CBD. *Total Potential THC = (0.877 x THCa) + THC. *Total Potential CBG = (0.877 x CBGa) + CBG.

*Total Potential THC/CBD are calculated to take into account the loss of an acid group during decarboxylation.



J. Hobgood
Laboratory Manager

SIGNATURE

Jamie Hobgood

LABORATORY MANAGER

12/07/2022 12:57 PM

DATE

This product has been tested by CannaBusiness Laboratories using validated testing methodologies and a quality system. Values reported relate only to the product tested. CannaBusiness Laboratories makes no claims as to the efficacy, safety, or other risks associated with any detected or non-detected levels of any compounds reported herein. This Certificate shall not be reproduced except in full, without the written permission of CannaBusiness Laboratories. Photo is of sample received by the lab and may vary from final packaging. The results apply to the sample as received.



Certificate of Analysis

CANNABUSINESS LABORATORIES, LLC

Customer

Flowerz, LLC
40 McFerrin Avenue
Nashville, TN 37206



Overall Batch Results	
Pesticide	Moisture Content
Potency	Water Activity
Mycotoxins	Heavy Metals
Microbial Screen	Residual Solvents
Terpenoids	

Sample Name: Sapphire Kush

Sample ID: 221121021

Order Number: CB221121009

Product Type: Flower

Sample Type: Flower

Received Date: 12/05/2022

Batch Number:

COA released: 12/07/2022 12:57 PM

Potency (mg/g) Dry Weight

Date Tested: 12/06/2022

Method: CB-SOP-028

Instrument:

0.556 %	13.54 %	17.12 %	171.2 mg/g
Total THC	Total CBD	Total Cannabinoids	Total Cannabinoids

Analyte	Result	Units	LOQ	Result	Units
CBC (Cannabichromene)	0.046	%	0.010	0.455	mg/g
CBD (Cannabidiol)	0.445	%	0.010	4.450	mg/g
CBDa (Cannabidiolic Acid)	14.94	%	0.010	149.4	mg/g
CBDV (Cannabidivarin)	ND	%	0.010	ND	mg/g
CBG (Cannabigerol)	0.084	%	0.010	0.842	mg/g
CBGa (Cannabigerolic Acid)	0.986	%	0.010	9.856	mg/g
CBN (Cannabinol)	ND	%	0.010	ND	mg/g
D8-THC (D8-Tetrahydrocannabinol)	ND	%	0.010	ND	mg/g
D9-THC (D9-Tetrahydrocannabinol)	0.069	%	0.010	0.694	mg/g
THCa (Tetrahydrocannabinolic Acid)	0.555	%	0.010	5.549	mg/g

Terpenoids

Date Tested: 12/06/2022

Method: CB-SOP-026

Instrument:

Analyte	Result	Unit	LOQ	Result	Unit
alpha-Bisabolol	<LOQ	mg/g	0.100	<LOQ	%
alpha-humulene	0.312	mg/g	0.100	0.0312	%
alpha-pinene	0.202	mg/g	0.100	0.0202	%
alpha-terpinene	0.100	mg/g	0.100	0.0100	%
beta-caryophyllene	1.166	mg/g	0.100	0.1166	%
Beta-myrcene	0.808	mg/g	0.100	0.0808	%
Beta-pinene	0.281	mg/g	0.100	0.0281	%
cis-Nerolidol	<LOQ	mg/g	0.100	<LOQ	%
Camphene	<LOQ	mg/g	0.100	<LOQ	%
d-Limonene	0.489	mg/g	0.100	0.0489	%
delta-3-Carene	<LOQ	mg/g	0.100	<LOQ	%
Eucalyptol	<LOQ	mg/g	0.100	<LOQ	%
gamma-Terpinene	<LOQ	mg/g	0.100	<LOQ	%
Geraniol	<LOQ	mg/g	0.100	<LOQ	%
Guaiol	0.207	mg/g	0.100	0.0207	%
Isopulegol	<LOQ	mg/g	0.100	<LOQ	%
Linalool	0.237	mg/g	0.100	0.0237	%
Ocimene (mixture of isomers)	0.290	mg/g	0.100	0.0290	%
p-Isopropyltoluene (p-Cymene)	<LOQ	mg/g	0.100	<LOQ	%
trans-beta-Ocimene	<LOQ	mg/g	0.100	<LOQ	%
trans-Nerolidol	<LOQ	mg/g	0.100	<LOQ	%
Terpinolene	1.925	mg/g	0.100	0.1925	%

Potency (mg/g) Dry Weight

Date Tested: 12/06/2022

Method: CB-SOP-028

Instrument:

Analyte	Result	Units	LOQ	Result	Analyte	Result	Units	LOQ	Result
Percent Moisture	11	%	0.010						



J. Hobgood
Laboratory Manager

Jamie Hobgood

12/07/2022 12:57 PM

SIGNATURE

DATE

NT = Not tested, ND = Not detected; LOQ = Limit of Quantitation; <LOQ = Detected; >ULOL = Above upper limit of linearity; CFU/g = Colony forming units per 1 gram; TNTC = Too numerous to count

This product has been tested by CannaBusiness Laboratories using validated testing methodologies and a quality system. Values reported relate only to the product tested. CannaBusiness Laboratories makes no claims as to the efficacy, safety, or other risks associated with any detected or non-detected levels of any compounds reported herein. This Certificate shall not be reproduced except in full, without the written permission of CannaBusiness Laboratories. Photo is of sample received by the lab and may vary from final packaging. The results apply to the sample as received.